

DTC	P1783	Transfer N SW Circuit Malfunction
------------	--------------	--

CIRCUIT DESCRIPTION

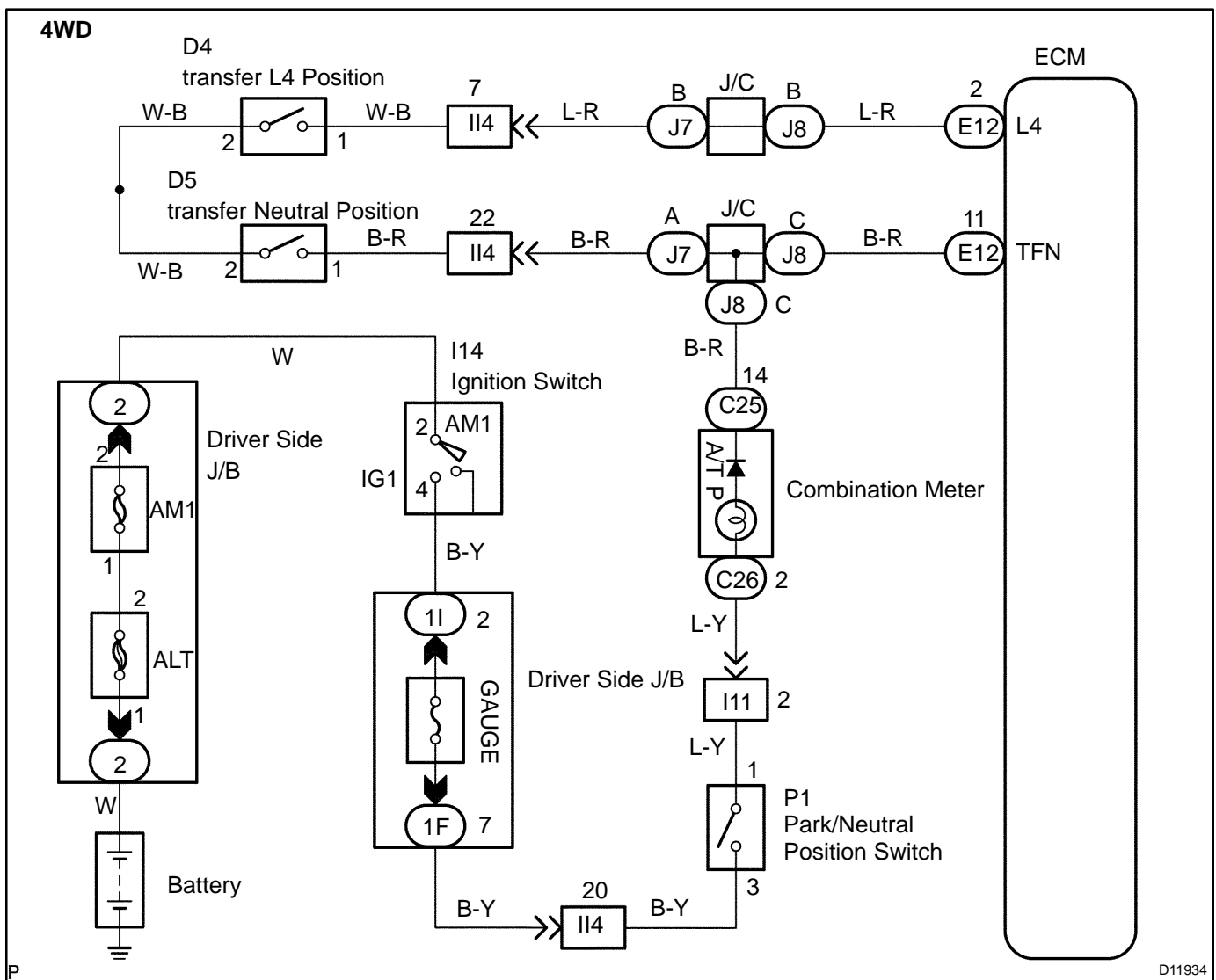
The propeller shaft and wheels are free even when the transmission shift lever is set to P as long as the transfer shift lever is in Neutral position. The A/T.P. indicator light lights up to warn the drive that the propeller shaft and wheels are not locked.

If the A/T.P. indicator light goes on, the transfer shift lever should be shifted out of N position.

The ECM receive signal TFN from the indicator switch (neutral position switch).

DTC No.	DTC Detecting Condition	Trouble Area
P1783	While driving under conditions (a) and (b) for 30 seconds or more, the indicator switch(TFN switch) is ON . (2-trip detection logic) (a) Vehicle speed: 25 km/h (16 mph) or more (b) Transfer shift position is H	<ul style="list-style-type: none"> • Short in transfer neutral position switch signal circuit • Transfer neutral position switch • ECM

WIRING DIAGRAM

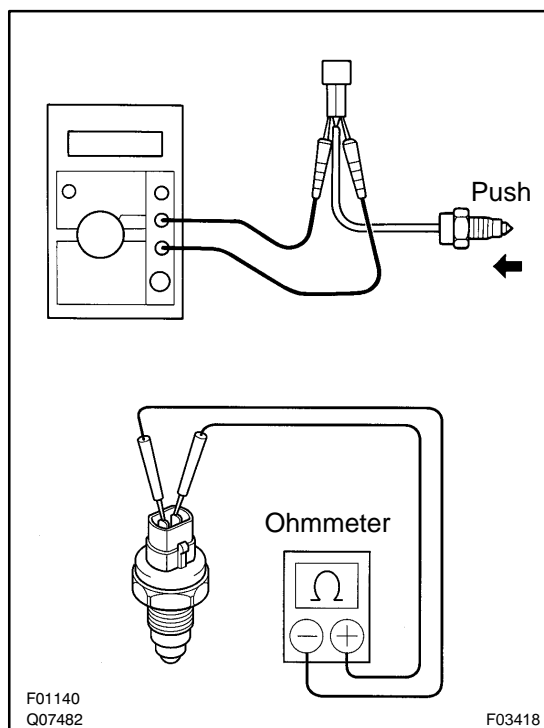


INSPECTION PROCEDURE

- 1 Check park/neutral position switch (See page [DI-203](#)).

NG**Replace the park/neutral position switch.****OK**

- 2 Check transfer neutral position switch.

**PREPARATION:**

Remove the transfer park/neutral position switch (See page [TR-9](#)).

CHECK:

Check that there is continuity between terminals, as shown.

OK:

Switch position	Specified condition
Push	Continuity
Free	No continuity

OK**Replace the transfer neutral position switch.****NG**

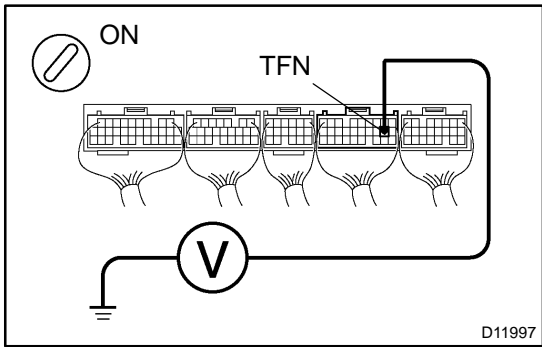
3 Check combination meter (See page [BE-45](#)).

NG

Repair or replace the combination meter.

OK

4 Check voltage between terminal TFN of ECM and body ground.



PREPARATION:

Remove the ECM with connectors still connected.

CHECK:

Turn the ignition switch ON, measure voltage between terminal TFN of ECM and body ground when transfer shift lever is shifted to the following position.

OK:

Transfer shift position	Voltage (V)
N	Below 1.5
Except N	9 - 14

OK

Proceed to next circuit inspection shown on problem symptom chart (See page [DI-175](#)).

NG

5 Check for open or short circuit in harness and connector between transfer neutral position switch and ECM (See page [IN-28](#)).

NG

Repair or replace harness or connector.

OK

Check and replace ECM.